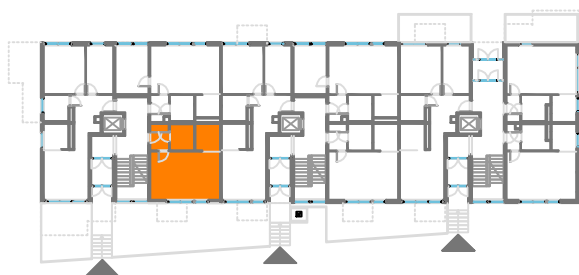
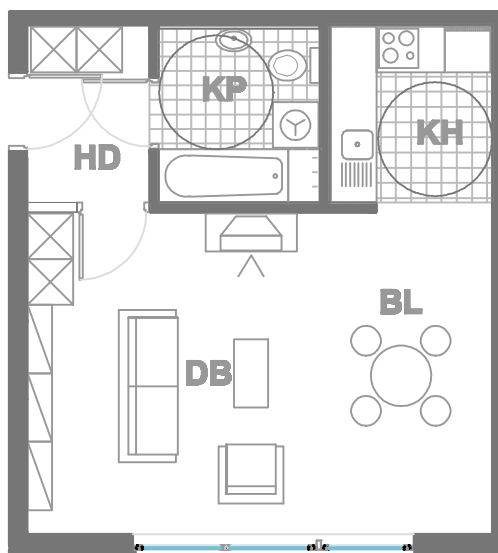


## ISKAZ NETTO POVRŠINA



d.b + bl.	26,07m <sup>2</sup>
kuhinja	5,19m <sup>2</sup>
kupaonica	4,84m <sup>2</sup>
hodnik	3,76m <sup>2</sup>
ukupno	39,86m <sup>2</sup>
spremište SP12(2.76x0.5)	1,38m <sup>2</sup>
ukupno	41,24m <sup>2</sup>



MJERILO  
1:100

STAN  
**TIP2 - D3**

ZGRADA 3

PRIZEMLJE  
1 SOBNI  
POVRŠINA 41.24 m<sup>2</sup>

N A S E L J E J A D R A N I V A N I Ć G R A D