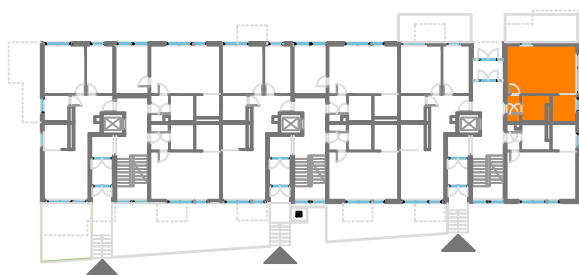
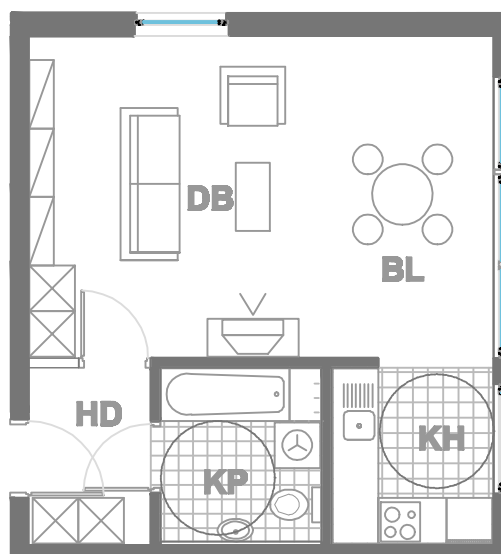


ISKAZ NETTO POVRŠINA



d.b + bl.	26,07m ²
kuhinja	5,19m ²
kupaonica	4,82m ²
hodnik	2,80m ²
ukupno	38,88m ²
spremište SP47(2.76x0.5)	1,38m ²
ukupno	40,26m ²



MJERILO
1:100

STAN
TIP2 - D8

ZGRADA 3

PRIZEMLJE
1 SOBNI
POVRŠINA 40.26 m²

N A S E L J E J A D R A N I V A N I Ć G R A D