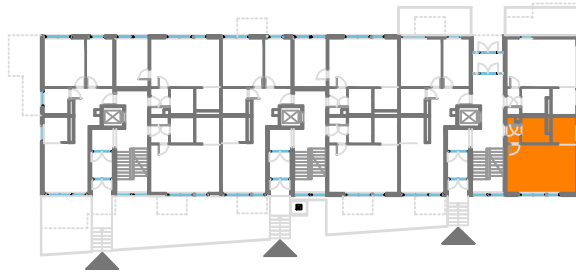
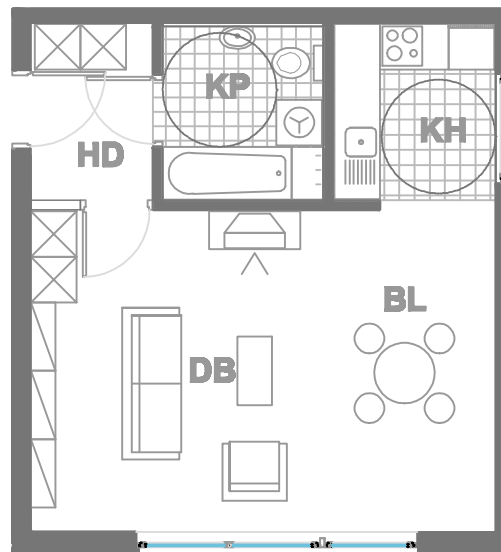


## ISKAZ NETTO POVRŠINA



d.b + bl.	<b>26,07m<sup>2</sup></b>
kuhinja	<b>5,19m<sup>2</sup></b>
kupaonica	<b>4,82m<sup>2</sup></b>
hodnik	<b>2,38m<sup>2</sup></b>
ukupno	<b>38,46m<sup>2</sup></b>
spremište SP48(2.76x0.5)	<b>1,38m<sup>2</sup></b>
ukupno	<b>39,84m<sup>2</sup></b>



 **MJERILO**  
**1:100**

STAN  
**TIP2 - D9**

ZGRADA 3

PRIZEMLJE  
1 SOBNI  
POVRŠINA 39.84 m<sup>2</sup>

N A S E L J E J A D R A N I V A N I Ć G R A D