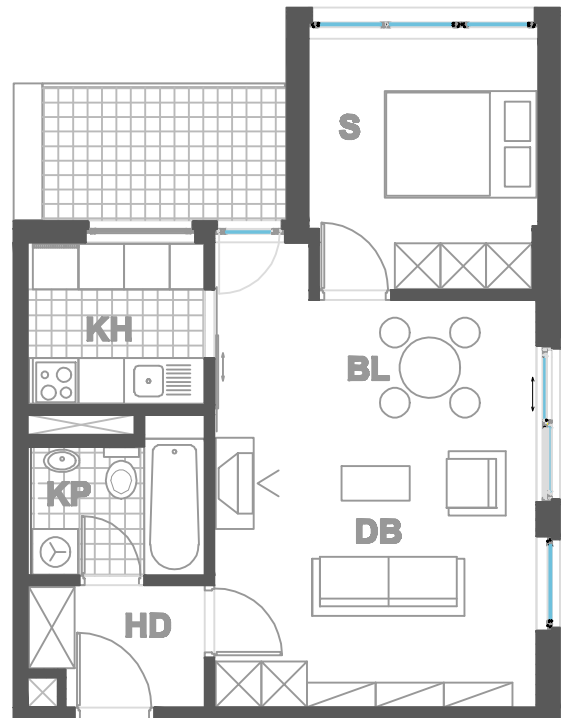


### ISKAZ NETTO POVRŠINA

d.b + bl.	<b>23,80m<sup>2</sup></b>
kuhinja	<b>5,00m<sup>2</sup></b>
kupaonica	<b>4,22m<sup>2</sup></b>
hodnik	<b>3,51m<sup>2</sup></b>
sp. soba	<b>9,83m<sup>2</sup></b>
balkon(5.62x0.75)	<b>4,21m<sup>2</sup></b>
ukupno	<b>50,57m<sup>2</sup></b>
spremište SP37(2.53x0.5)	<b>1,26m<sup>2</sup></b>
ukupno	<b>51,83 m<sup>2</sup></b>



**MJERILO**  
**1:100**

STAN  
**TIP4 - A12**

ZGRADA 1

KAT1  
2 SOBNI  
POVRŠINA 51.83 m<sup>2</sup>

N A S E L J E J A D R A N I V A N I Ć G R A D