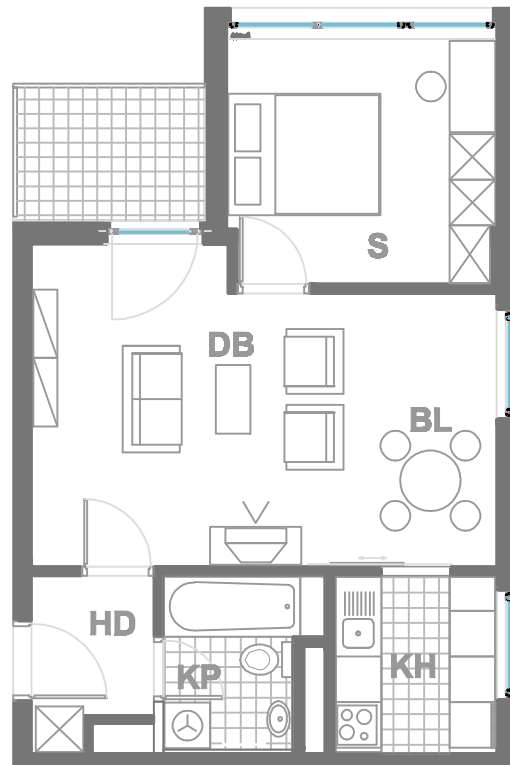


### ISKAZ NETTO POVRŠINA

d.b + bl.	<b>23,70m<sup>2</sup></b>
kuhinja	<b>5,00m<sup>2</sup></b>
kupaonica	<b>4,22m<sup>2</sup></b>
hodnik	<b>3,76m<sup>2</sup></b>
sp. soba	<b>11,30m<sup>2</sup></b>
balkon(3.74x0.75)	<b>2,80m<sup>2</sup></b>
ukupno	<b>50,78m<sup>2</sup></b>
spremište SP39(2.55x0.5)	<b>1,27m<sup>2</sup></b>
ukupno	<b>52,05m<sup>2</sup></b>



 **MJERILO**  
**1:100**

STAN  
**TIP4 - D28**

ZGRADA 3

KAT2  
2 SOBNI  
POVRŠINA 52.05 m<sup>2</sup>

N A S E L J E J A D R A N I V A N I Ć G R A D