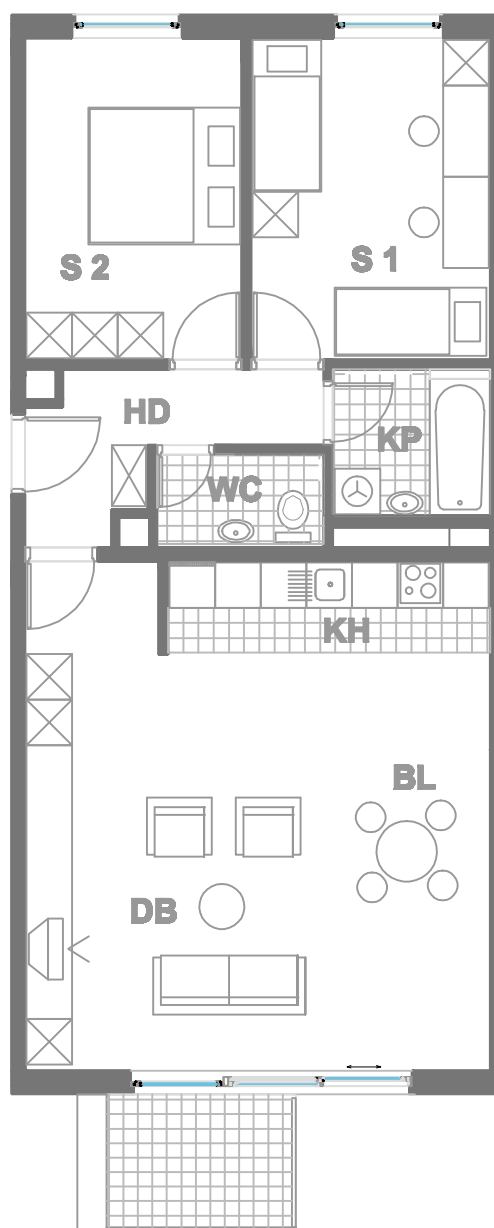


### ISKAZ NETTO POVRŠINA

d.b + bl.	<b>35,78m<sup>2</sup></b>
kuhinja	<b>5,19m<sup>2</sup></b>
kupaonica	<b>3,98m<sup>2</sup></b>
wc	<b>2,54m<sup>2</sup></b>
hodnik	<b>5,88m<sup>2</sup></b>
sp. soba 1	<b>13,37m<sup>2</sup></b>
sp. soba 2	<b>12,11m<sup>2</sup></b>
balkon(4.27x0.5)	<b>2,13m<sup>2</sup></b>
ukupno	<b>80,98m<sup>2</sup></b>
spremište SP19(2.81x0.5)	<b>1,40m<sup>2</sup></b>
ukupno	<b>82,38m<sup>2</sup></b>



MJERILO  
1:100

STAN  
**TIP5 - D15**

ZGRADA 3

KAT1  
3 SOBNI  
POVRŠINA 82.38 m<sup>2</sup>

N A S E L J E J A D R A N I V A N I Ć G R A D