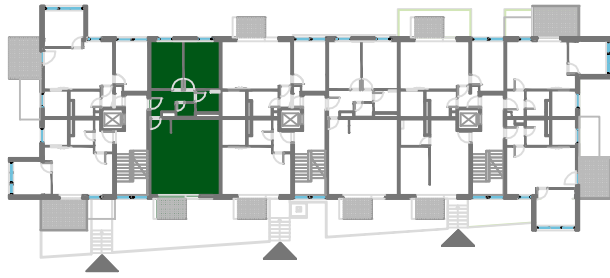
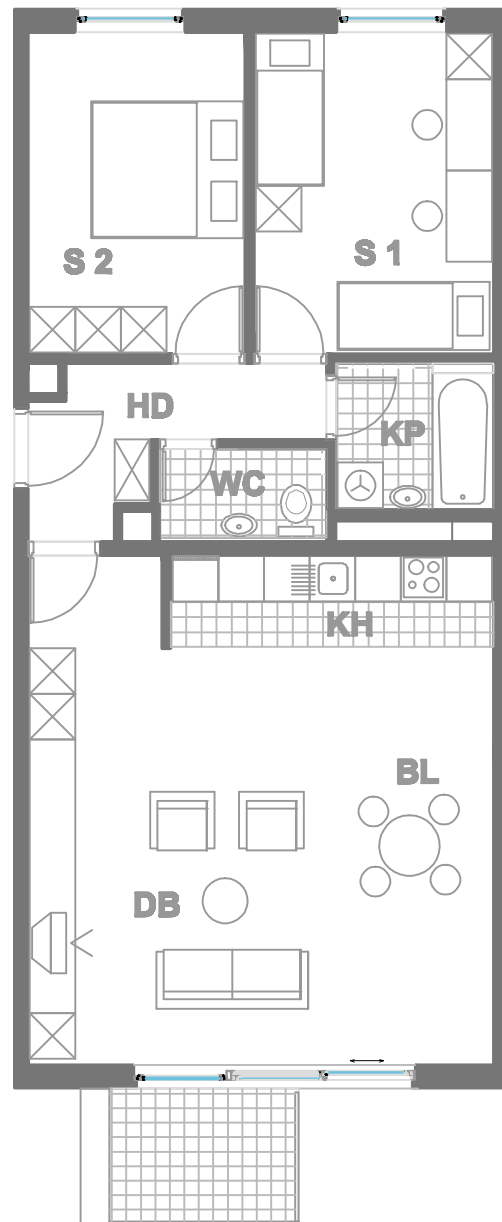


## ISKAZ NETTO POVRŠINA



d.b + bl.	<b>35,78m<sup>2</sup></b>
kuhinja	<b>5,19m<sup>2</sup></b>
kupaonica	<b>3,96m<sup>2</sup></b>
wc	<b>2,26m<sup>2</sup></b>
hodnik	<b>5,96m<sup>2</sup></b>
sp. soba 1	<b>13,40m<sup>2</sup></b>
sp. soba 2	<b>12,14m<sup>2</sup></b>
balkon(4.27x0.5)	<b>2,13m<sup>2</sup></b>
ukupno	<b>80,82m<sup>2</sup></b>
spremište SP7(3.63x0.5)	<b>1,81m<sup>2</sup></b>
ukupno	<b>82,63m<sup>2</sup></b>



MJERILO  
1 : 100

STAN  
**TIP5 - D32**

ZGRADA 3

KAT3  
3 SOBNI  
POVRŠINA 82.63 m<sup>2</sup>

N A S E L J E J A D R A N I V A N I Ć G R A D