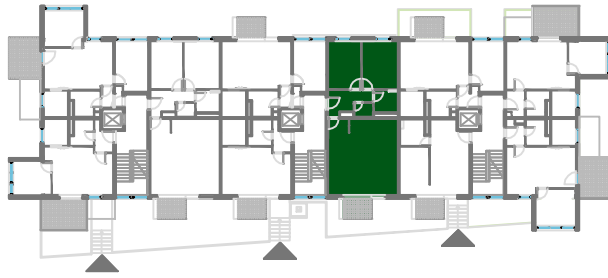
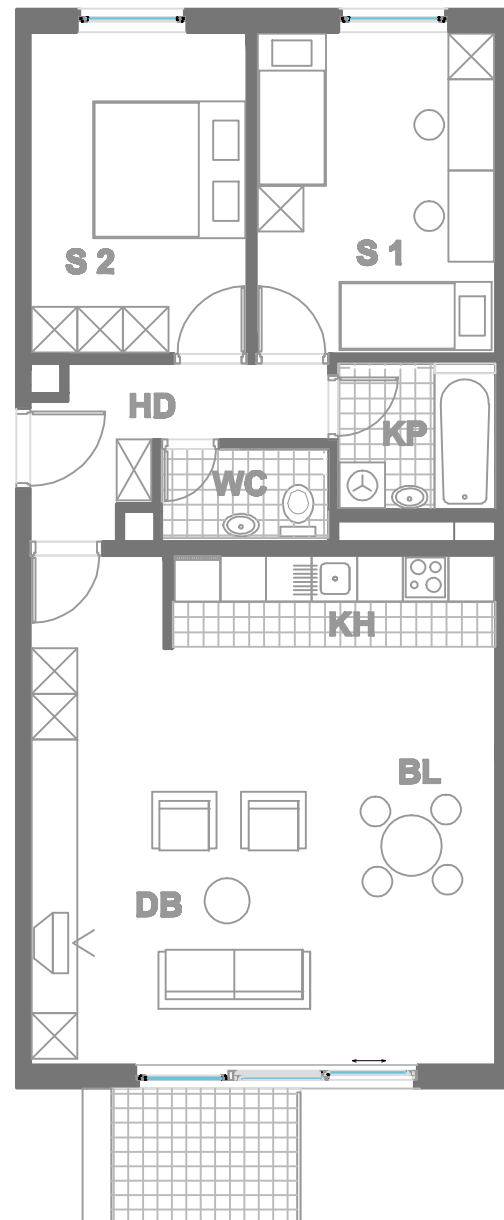


ISKAZ NETTO POVRŠINA



d.b + bl.	35,78m²
kuhinja	5,19m²
kupaonica	3,98m²
wc	2,26m²
hodnik	6,00m²
sp. soba 1	13,37m²
sp. soba 2	12,11m²
balkon(4.27x0.5)	2,13m²
ukupno	80,82m²
spremište SP26(2.60x0.5)	1,30m²
ukupno	82,12m²



MJERILO
1 : 100

STAN
TIP5 - D35

ZGRADA 3

KAT3
3 SOBNI
POVRŠINA 82.12 m²

N A S E L J E J A D R A N I V A N I Ć G R A D