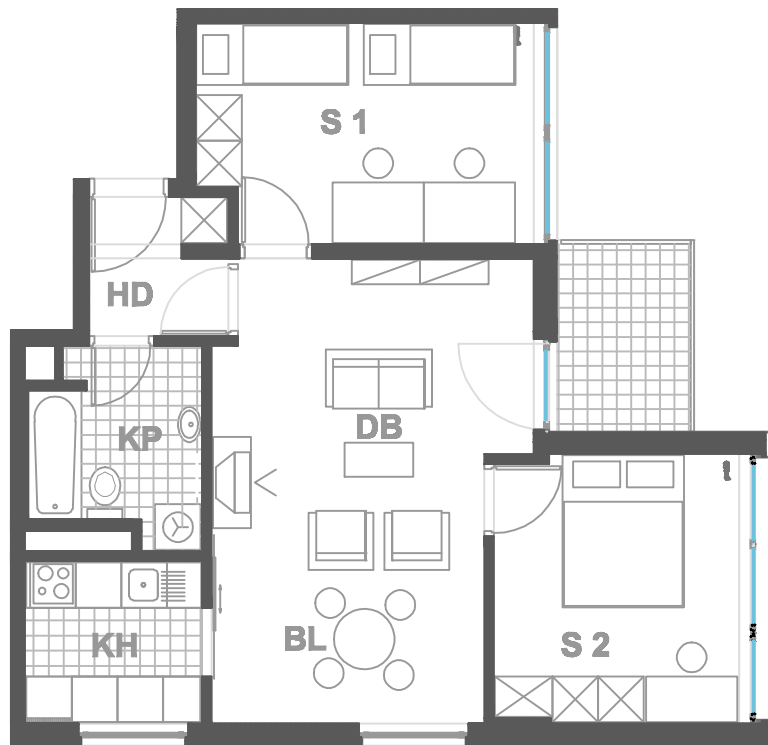


ISKAZ NETTO POVRŠINA

d.b + bl.	23,30m²
kuhinja	5,00m²
kupaonica	5,25m²
hodnik	2,98m²
sp. soba 1	12,63m²
sp. soba 2	11,30m²
balkon (3,75x0.75)	2,81m²
ukupno	63,27m²
spremište SP6(3.4x0.5)	1,70m²
ukupno	64,97 m²



MJERILO
1:100

STAN
TIP6 - A29

ZGRADA 1

KAT2
3 SOBNI
POVRŠINA 64.97 m2

N A S E L J E J A D R A N I V A N I Ć G R A D