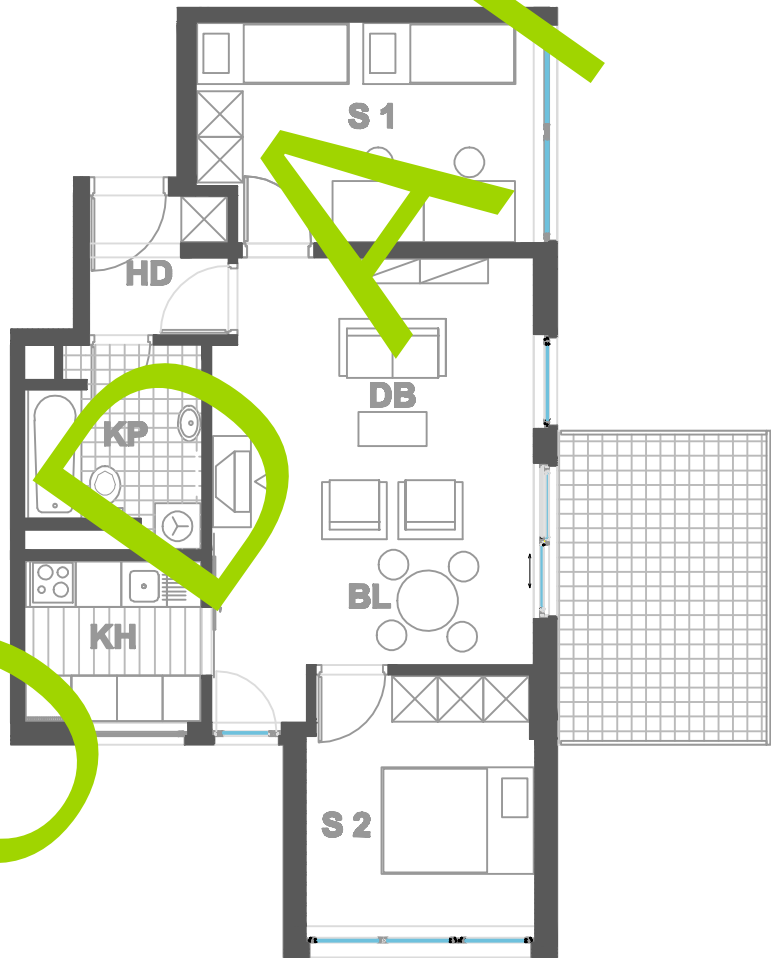


### ISKAZ NETTO POVRŠINA

d.b + bl.	23,40m <sup>2</sup>
kuhinja	5,25m <sup>2</sup>
kupaonica	5,25m <sup>2</sup>
hodnik	2,98m <sup>2</sup>
sp. soba 1	12,63m <sup>2</sup>
sp. soba 2	9,84m <sup>2</sup>
balkon(11.08x0.5)	5,54m <sup>2</sup>
ukupno	64,64m <sup>2</sup>
spremište S1(2.74x0.5)	1,37m <sup>2</sup>
ukupno	66,01 m <sup>2</sup>



MJERILO  
1:100

STAN  
**TIP8 - A39**

ZGRADA 1

KAT3  
2.5 SOBNI  
POVRŠINA 66.01 m<sup>2</sup>

N A S E L J E J A D R A N I V A N I Ć G R A D