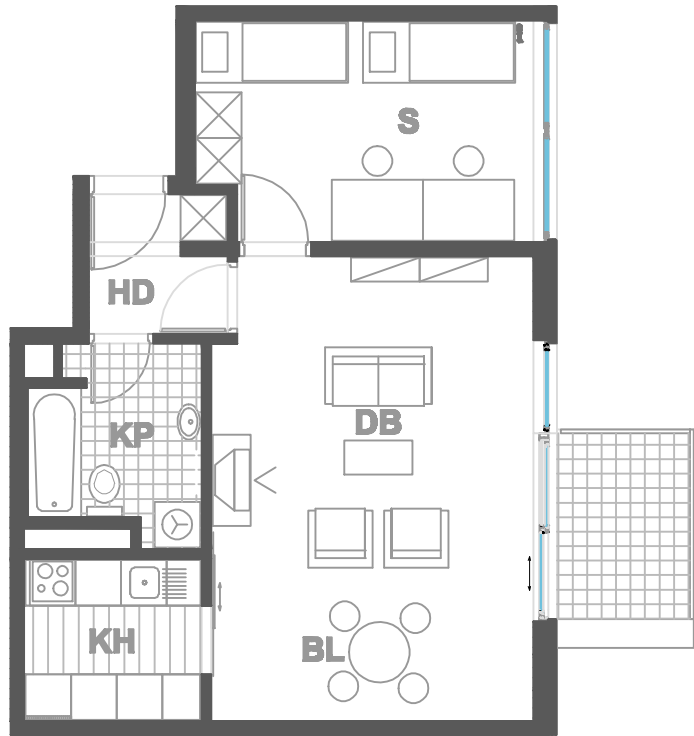


### ISKAZ NETTO POVRŠINA

d.b + bl.	<b>25,67m<sup>2</sup></b>
kuhinja	<b>5,00m<sup>2</sup></b>
kupaonica	<b>5,25m<sup>2</sup></b>
hodnik	<b>2,98m<sup>2</sup></b>
sp. soba	<b>12,63m<sup>2</sup></b>
balkon(4.27x0.5)	<b>2,13m<sup>2</sup></b>
ukupno	<b>53,66m<sup>2</sup></b>
spremište SP43(2.53x0.5)	<b>1,26m<sup>2</sup></b>
ukupno	<b>54,92 m<sup>2</sup></b>



**MJERILO**  
**1:100**

STAN  
**TIP10 - A23**

ZGRADA 1

KAT2  
2 SOBNI  
POVRŠINA 54.92 m2

N A S E L J E J A D R A N I V A N I Ć G R A D