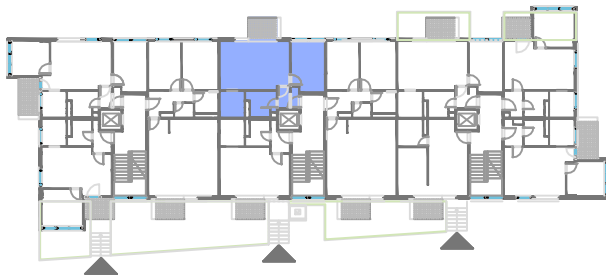
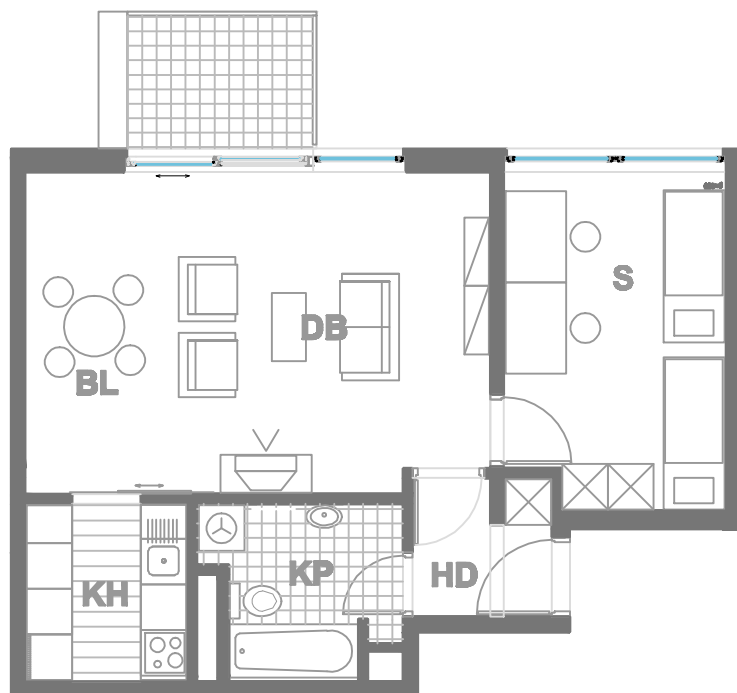


ISKAZ NETTO POVRŠINA



| | |
|--------------------------|---------------------------|
| d.b + bl. | 25,67m² |
| kuhinja | 5,00m² |
| kupaonica | 5,13m² |
| hodnik | 3,09m² |
| sp. soba | 12,63m² |
| balkon(4.27x0.5) | 2,13m² |
| ukupno | 53,65m² |
| spremište SP17(2.76x0.5) | 1,38m² |
| ukupno | 55,03m² |



MJERILO
1:100

STAN
TIP10 - D13

ZGRADA 3

KAT1
2 SOBNI
POVRŠINA 55.03 m²

N A S E L J E J A D R A N I V A N I Ć G R A D